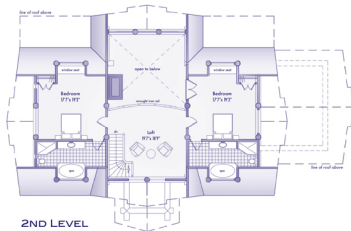


## *A truly modern spin on the log home concept*



2ND LEVEL

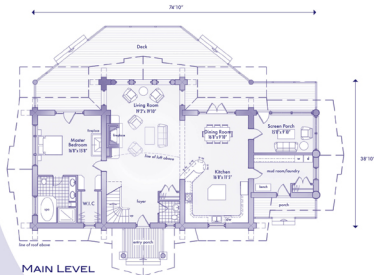
3 BEDROOM  
3,385 SQ. FT.

# JASPER

A classic floor plan absolutely loaded with features, the Jasper puts a truly modern spin on the log home concept. Featuring a stunning glass wall in the living room gable, a gorgeous log archway in the Great Room, a large deck accented with log railings and glass inserts, and numerous other features such as a winder staircase, bedroom window seats, and Juliet balcony, this is one log home that is sure to get noticed.

This home also includes a large, open kitchen with a four-seat island and bar, as well as a screened porch just off the dining room, making it perfect for outdoor dining, entertaining, or just sitting back and enjoying the scenery.

One of the great things about our log homes is that they can be customized to meet your needs. With the Jasper, you can choose to keep the two upstairs master suites or split them up to create four smaller bedrooms – making it perfectly suited for larger families or as a shared vacation home with a group of friends.



MAIN LEVEL