

*An extremely efficient design that packs a ton of features into its smaller blueprint*

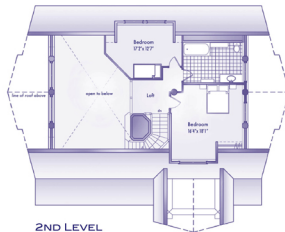


# ST. LAWRENCE

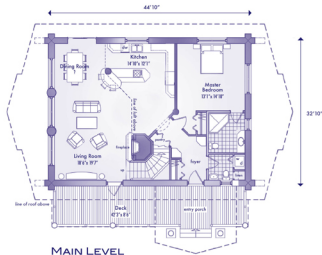
Don't let the total square footage fool you – although it's a smaller cottage-style log home, the St. Lawrence features an extremely efficient open concept design that packs a ton of features into its smaller blueprint.

The St. Lawrence makes the most of its space by featuring an impressive wall of glass in the living room and large dormer windows in each bedroom, which opens the entire home up to the outdoors. This home also has several other attractive log home staples, including a large covered front porch and a beautiful winder staircase that wraps around the stone fireplace in the vaulted Great Room.

Although designed as a second home, with its three bedrooms, three baths, and a spacious kitchen that hosts an island and bar, the St. Lawrence can also easily be used as a main residence for couples and smaller families.



2ND LEVEL



MAIN LEVEL



3 BEDROOM  
2,065 SQ. FT.